



KAFETZIN

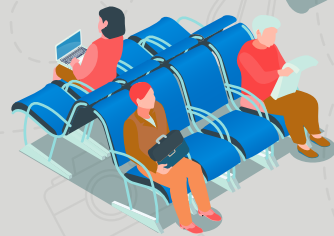
COFFEE

INTINERAR



DAY 1

- Arrival at Mexico City Airport.
- Departure from Mexico City Airport by bus to Puebla City. Travel time is 2 hours.
- Arrival in Puebla City and overnight stay at Hotel Royalty Puebla (Palafox and Mendoza Avenue, 8, Puebla Centro).



DAY 2

- Visit the Celas Talavera Museum.
- Activities: Tour the Talavera museum-workshop and make a Talavera craft.
- An optional activity is the Legends Tour (better known as "Callejoniadas"), which tells mythical stories of the city while you walk through its most emblematic streets.
- This activity begins at 9:00 PM.



DAY 3

- Depart Puebla City at 5:00 AM for the village of Zacapoaxtla.
- Estimated arrival time is 7:00 AM.
- Overnight stay at Hotel Plaza Zacapoaxtla.
- Activities: Visit a coffee farm, the Cascada del Amor (Love Waterfall), the Kafetzin Coffee production site, and the Zacapoaxtla Artisan House, where you can see how local crafts are made and participate in various workshops with local artisans.



DAY 4

- Depart from Zacapoaxtla at 6:00 AM for the city of Cuetzalan, estimated arrival time 7:00 AM.
- Overnight at Cabañas Villa de los Vientos.
- Activities: Guided tour of the town of Cuetzalan with a local guide who will explain the history of the town.



DAY 5

- Depart from Cuetzalan at 9:00 AM for the city of Puebla.
- Estimated arrival time 12:00 PM.
- Overnight at Hotel Royalty Puebla.
- Activities: Tour the main streets of the capital city and visit its craft markets where you will find souvenirs.



Breakfast times are from 7am to 9am



Meal or lunch hours are from 1pm to 3pm



Dinner hours are from 6pm onwards